

Wine Australia providing insights on Australian Wine

Regional snapshot 2019 - Padthaway

| | | |
|-------|-----------------|--|
| State | South Australia | |
|-------|-----------------|--|

Published July 2020

Plantings

Source: National Vineyard Scan 2019 and ABS

| | Padthaway | All regions |
|---|-----------|-------------|
| Total vineyard area (hectares) | 4,067 | 146,244 |
| Percentage red varieties | 64% | 64% |
| Percentage of national vineyards | 3% | |
| Percentage of South Australia vineyards | 5% | |

Crush

Source: National Vintage Survey 2019

| | Padthaway | All regions |
|----------------------------------|-----------|-------------|
| Estimated tonnes crushed in 2019 | 24,660 | 1,725,758 |
| Average yield (tonnes/ha) | 6.1 | 11.8 |
| Change in crush from 2018 | -40% | 3% |

| Top five varieties in Padthaway in 2019 | Share of tonnes | Av price/tonne |
|---|-----------------|----------------|
| Shiraz | 27% | \$1,341 |
| Chardonnay | 25% | \$655 |
| Cabernet Sauvignon | 18% | \$1,286 |
| Pinot Gris/Grigio | 6% | \$956 |
| Merlot | 6% | \$802 |

Exports

Source: Wine Australia Wine Export Approval System YE December 2019

| Exports by GI content | Padthaway | All exports |
|---|-----------|-------------|
| Export volume by GI content ('000 litres) | 4,442 | 743,464 |
| Percentage of total exports | 0.6% | 100% |
| Percentage of crush exported (estimate) | 26% | 62% |

Label claim exports (bottled only)

| | Padthaway and Padthaway blends | Change in 2019 |
|---|--------------------------------|----------------|
| Export volume by GI label claim ('000 litres) | 999 ↑ | 15% |
| Export value by GI label claim (\$A '000) | 6,279 ↑ | 12% |
| Average value per litre | \$6.29 ↓ | -2% |

| Share of bottled export volume by destination market | Padthaway and Padthaway blends | All bottled wine exports |
|--|--------------------------------|--------------------------|
| United Kingdom | 50% | 10% |
| Canada | 30% | 7% |
| China, Pr | 9% | 33% |
| United States Of America | 5% | 24% |
| Korea, R | 2% | 1% |
| Others | 5% | 25% |

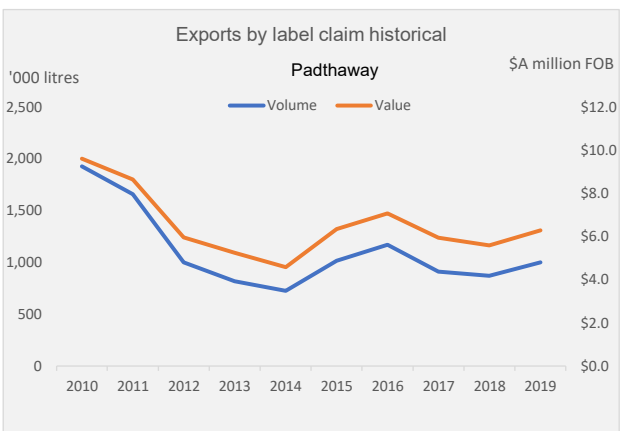
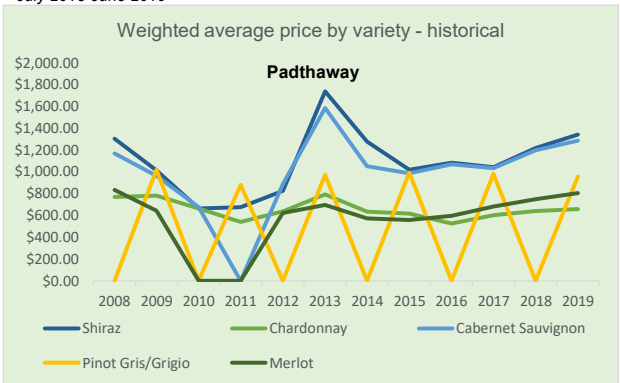
| Share of bottled export volume by price point | Padthaway and Padthaway blends | All bottled wine exports |
|---|--------------------------------|--------------------------|
| \$2.49 and under | 47% | 2% |
| \$2.50 to \$4.99 | 29% | 62% |
| \$5.00 to \$7.49 | 9% | 18% |
| \$7.50 to \$9.99 | 8% | 5% |
| \$10.00-\$14.99 | 6% | 6% |
| \$15.00-\$19.99 | 2% | 1% |
| \$20 and over | 0% | 5% |

Climate data

Source: Bureau of Meteorology (2019)

| Padthaway | | | | | |
|-------------------------|---------------------|------------------|---------------|----------|---------|
| Size (km ²) | 360 | Elevation (m) | 12-117 | Latitude | 36° 69' |
| Time period | Mean Jan temp (MJT) | Annual* rainfall | Oct-April GSR | GDD | |
| 1961-1990 average | 20.1 °C | 552 mm | 215 mm | 1578 | |
| 1991-2018 average | 20.7 °C | 498 mm | 194 mm | 1640 | |
| 2018-19 season* | 22.1 °C | 491 mm | 147 mm | 1747 | |

*July 2018-June 2019



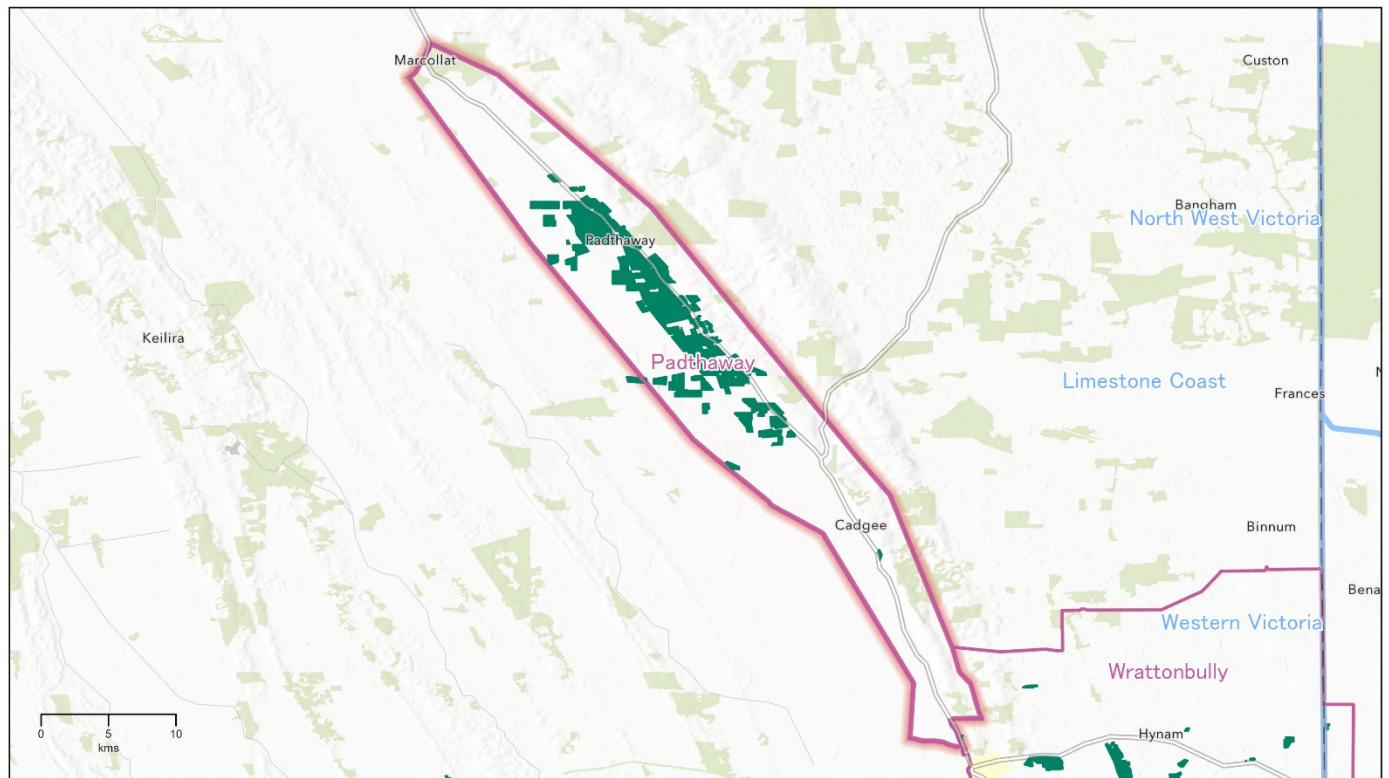
Notes

Meteorological data is taken from the national climate databank of the Bureau of Meteorology: the Australian Data Archive for Meteorology (ADAM). Climate indices have been calculated across the whole GI region by the Antarctic Climate Ecosystem CRC as part of a research project co-funded by Wine Australia. Growing season rainfall (GSR) and growing degree days (GDD) are both calculated from October to April across the whole GI region. GSR and GDD for individual vineyards will vary from this value. Latitude data is the centroid of each GI region. Altitude/elevation data is the highest and lowest point in the region - regardless of whether there is a vineyard at that location. Area data comes from the National Vineyard Scan 2019 conducted by GAIA on behalf of Wine Australia. Variety share from ABS vineyard survey 2015. Estimated crush figures are higher than the figures reported in the survey as the estimated figure is raised to allow for the non-response rate. Exports by GI content includes all wine that has been identified by the exporter as coming from the GI, but not necessarily claimed on the label.

Regional snapshot 2019 – Padthaway

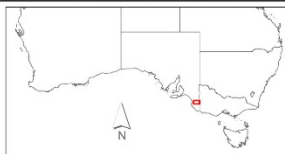
PADTHAWAY

South Australia



Wine Australia
for
Australian
Wine

Copyright in this map is owned by Wine Australia July 2020
 Vineyard boundaries created and supplied by GAIA for the National Vineyard Scan 2019. Visit www.gaia.com.au for more information. This information is reproduced with the permission of GAIA Innovations.
 Geographic Indications (GI) boundaries: Wine Australia (including South Australia) where they are provided with permission by Wine Australia. For other information on the Boundaries of Australian Wine Regions visit www.wineaustralia.com.au or gaia@gaia.com.au and other www.gaia.com.au publications.
 Base map sources: Esri, HERE, DeLorme, Mapbox, Bing, IGN, Swire, U.S. Geological Survey, AeroGRID, IGN, Esri, The Open Map Data, and the GIS User Community © Commonwealth of Australia (Geoscience Australia) 2016.
 No warranty, either express or implied, is made by the publisher for the use of the information contained in this publication or for any consequences arising from its use. The publisher shall not be liable for any damages or losses, either direct or indirect, arising from the use of the information contained in this publication.
 Map produced by TerraView Solutions Pty Ltd, June 2020



GI Regions
 GI Zones
 Vineyards (GAIA 2019)



This map provides a visual representation of the Geographical Indications (GI) boundary defined in the Initial Description for the GI. This boundary description is the final deliverable of the GI and in case of any discrepancy or ambiguity, the Initial Description prevails.

Disclaimer: While Wine Australia makes every effort to ensure the accuracy and currency of information within this report, we accept no responsibility for information, which may later prove to be misrepresented or inaccurate, or reliance placed on that information by readers.

Provisions of the Copyright Act 1968 apply to the contents of this publication, all other right reserved. For further copyright authorisation please see the www.wineaustralia.com website.

About Wine Australia: Wine Australia supports a competitive wine sector by investing in research, development and adoption (RDA), growing domestic and international markets, protecting the reputation of Australian wine and administering the Export and Regional Wine Support Package (ERWSP).

Wine Australia is an Australian Commonwealth Government statutory authority, established under the Wine Australia Act 2013, and funded by grape growers and winemakers through levies and user-pays charges and the Australian Government, which provides matching funding for RDA investments and funds the ERWSP.