

Wine Australia providing insights on Australian Wine

Regional snapshot 2019 - Langhorne Creek

State **South Australia**

Plantings

Source: National Vineyard Scan 2019 and ABS

	Langhorne Creek	All regions
Total vineyard area (hectares)	6,094	146,244
Percentage red varieties	85%	64%
Percentage of national vineyards	4%	
Percentage of South Australia vineyards	8%	

Crush

Source: National Vintage Survey 2019

	Langhorne Creek	All regions
Estimated tonnes crushed in 2019	51,801	1,725,758
Average yield (tonnes/ha)	8.5	11.8
Change in crush from 2018	8%	3%

Top five varieties in Langhorne Creek in 2019	Share of tonnes	Av price/tonne
Shiraz	36%	\$1,204
Cabernet Sauvignon	30%	\$1,136
Merlot	10%	\$895
Chardonnay	9%	\$586
Riesling	4%	#N/A

Exports

Source: Wine Australia Wine Export Approval System YE December 2019

Exports by GI content	Langhorne Creek	All exports
Export volume by GI content ('000 litres)	7,800	743,464
Percentage of total exports	1.0%	100%
Percentage of crush exported (estimate)	22%	62%

Label claim exports (bottled only)

	Langhorne Creek and Langhorne Creek blends	Change in 2019
Export volume by GI label claim ('000 litres)	3,946	27%
Export value by GI label claim (\$A '000)	30,309	11%
Average value per litre	\$7.68	-12%

Share of bottled export volume by destination market	Langhorne Creek and Langhorne Creek blends	All bottled wine exports
China, Pr	48%	33%
Canada	31%	7%
United Kingdom	5%	10%
New Zealand	3%	4%
United States Of America	2%	24%
Others	11%	21%

Share of bottled export volume by price point	Langhorne Creek and Langhorne Creek blends	All bottled wine exports
\$2.49 and under	0%	2%
\$2.50 to \$4.99	43%	62%
\$5.00 to \$7.49	29%	18%
\$7.50 to \$9.99	13%	5%
\$10.00-\$14.99	9%	6%
\$15.00-\$19.99	5%	1%
\$20 and over	0%	5%

Notes

Meteorological data is taken from the national climate databank of the Bureau of Meteorology: the Australian Data Archive for Meteorology (ADAM).

Climate indices have been calculated across the whole GI region by the Antarctic Climate Ecosystem CRC as part of a research project co-funded by Wine Australia.

Growing season rainfall (GSR) and growing degree days (GDD) are both calculated from October to April across the whole GI region. GSR and GDD for individual vineyards will vary from this value.

Latitude data is the centroid of each GI region. Altitude/elevation data is the highest and lowest point in the region - regardless of whether there is a vineyard at that location.

Area data comes from the National Vineyard Scan 2019 conducted by GAIA on behalf of Wine Australia. Variety share from ABS vineyard survey 2015.

Estimated crush figures are higher than the figures reported in the survey as the estimated figure is raised to allow for the non-response rate.

Exports by GI content includes all wine that has been identified by the exporter as coming from the GI, but not necessarily claimed on the label.

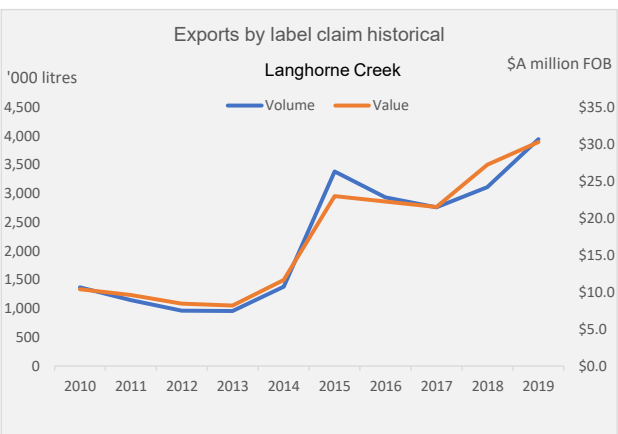
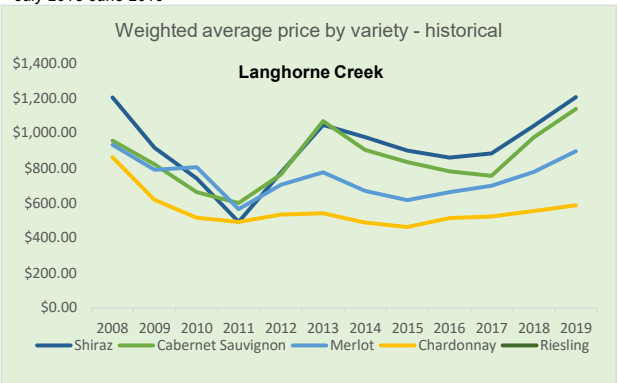
Published July 2020

Climate data

Source: Bureau of Meteorology (2019)

Langhorne Creek					
Size (km ²)	240	Elevation (m)	0-64	Latitude	35° 33'
Time period	Mean Jan temp (MJT)	Annual* rainfall	Oct-April GSR	GDD	
1961-1990 average	20.8 °C	384 mm	174 mm	1808	
1991-2018 average	21.4 °C	401 mm	170 mm	1893	
2018-19 season*	23.4 °C	316 mm	112 mm	2087	

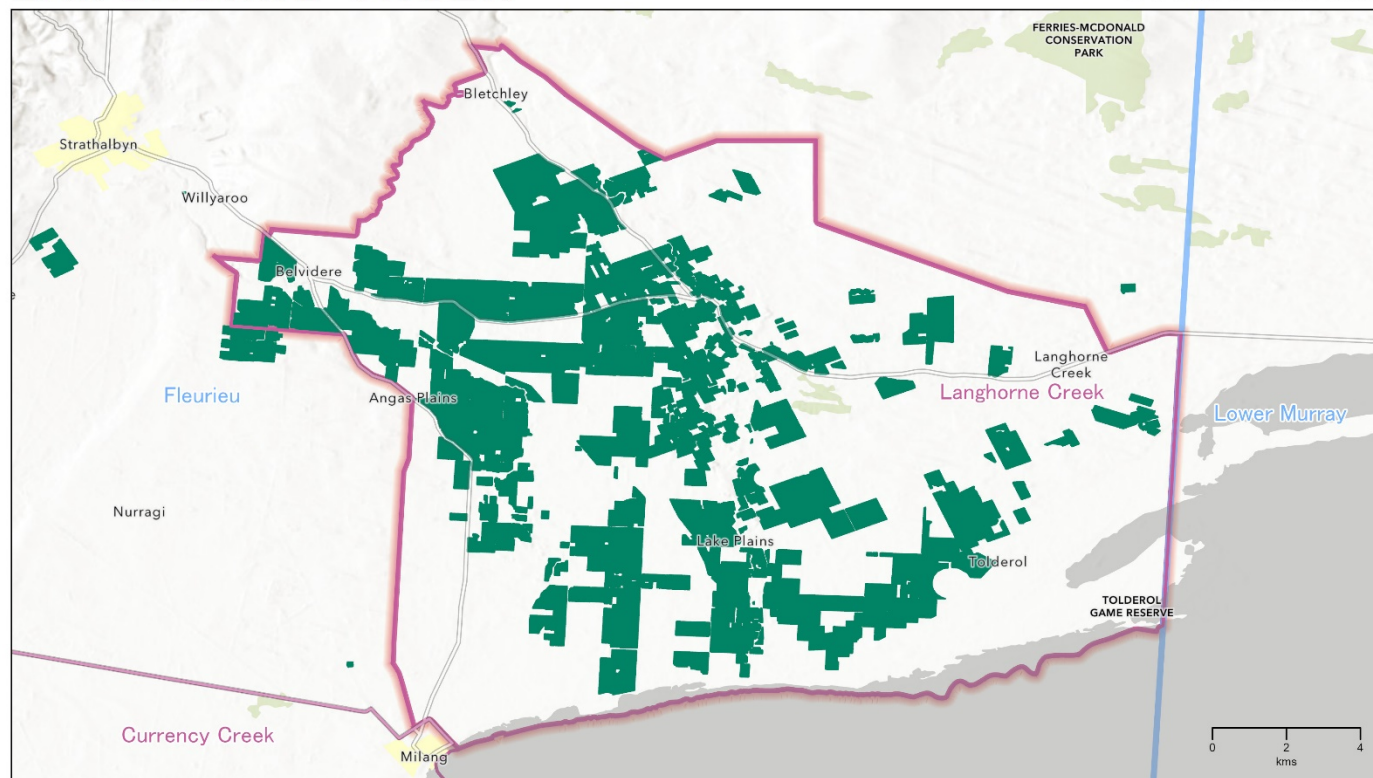
*July 2018-June 2019



Regional snapshot 2019 – Langhorne Creek

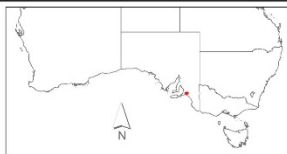
LANGHORNE CREEK

South Australia



Wine Australia for Australian Wine

Copyright in this map is owned by Wine Australia July 2020
 Vineyard boundaries created and supplied by GAIA for the National Vineyard Scan 2019. Visit www.gaia.net.au for more information. This information is reproduced with the permission of GAIA Innovations.
 Geographic Indications (GI) boundaries Wine Australia (including South Australia) when they are provided with permission by Wine Australia. For full information on the Boundaries of Geographical Indications (GI) visit www.wineaustralia.com.au/gi or contact gaia@wineaustralia.com.au
 Base map sources: Esri, HERE, DeLorme, Mapbox, Bing, Swire, OpenStreetMap contributors, and the GIS User Community © Commonwealth of Australia (Geoscience Australia) 2016.
 No warranty, liability, price and reproduction in whole or in part without the prior written permission of Wine Australia. All rights reserved. This document may be shared with approved third parties without further consent from Wine Australia. More information can be found at www.wineaustralia.com.au
 Map produced by Tracable Solutions Pty Ltd, June 2020



GI Regions
 GI Zones
 Vineyards (GAIA 2019)

This map provides a visual representation of the Geographical Indications (GI) boundary defined in the Initial Description of the GI. This boundary description is the legal definition of the GI and in case of any discrepancy or ambiguity, the Initial Description prevails.



Disclaimer: While Wine Australia makes every effort to ensure the accuracy and currency of information within this report, we accept no responsibility for information, which may later prove to be misrepresented or inaccurate, or reliance placed on that information by readers.

Provisions of the Copyright Act 1968 apply to the contents of this publication, all other right reserved. For further copyright authorisation please see the www.wineaustralia.com website.

About Wine Australia: Wine Australia supports a competitive wine sector by investing in research, development and adoption (RDA), growing domestic and international markets, protecting the reputation of Australian wine and administering the Export and Regional Wine Support Package (ERWSP).

Wine Australia is an Australian Commonwealth Government statutory authority, established under the Wine Australia Act 2013, and funded by grape growers and winemakers through levies and user-pays charges and the Australian Government, which provides matching funding for RDA investments and funds the ERWSP.

Wine Australia providing insights on Australian Wine