

# Wine Australia providing insights on Australian Wine

## Regional snapshot 2019 - Coonawarra

State	South Australia	
-------	-----------------	--

Published July 2020

### Plantings

Source: National Vineyard Scan 2019 and ABS

	Coonawarra	All regions
Total vineyard area (hectares)	5,293	146,244
Percentage red varieties	92%	64%
Percentage of national vineyards	4%	
Percentage of South Australia vineyards	7%	

### Crush

Source: National Vintage Survey 2019

	Coonawarra	All regions
Estimated tonnes crushed in 2019	34,413	1,725,758
Average yield (tonnes/ha)	6.5	11.8
Change in crush from 2018	-17%	3%

Top five varieties in Coonawarra in 2019

	Share of tonnes	Av price/tonne
Cabernet Sauvignon	49%	\$1,721
Shiraz	28%	\$1,458
Merlot	9%	\$1,031
Chardonnay	7%	\$782
Sauvignon Blanc	3%	\$723

### Exports

Source: Wine Australia Wine Export Approval System YE December 2019

Exports by GI content

	Coonawarra	All exports
Export volume by GI content ('000 litres)	7,049	743,464
Percentage of total exports	0.9%	100%
Percentage of crush exported (estimate)	29%	62%

### Label claim exports (bottled only)

	Coonawarra and Coonawarra blends	Change in 2019
Export volume by GI label claim ('000 litres)	3,348	4%
Export value by GI label claim (\$A '000)	50,047	24%
Average value per litre	\$14.95	19%

Share of bottled export volume by destination market

	Coonawarra and Coonawarra blends	All bottled wine exports
China, Pr	55%	33%
United Kingdom	8%	10%
Canada	6%	7%
United States Of America	5%	24%
New Zealand	4%	4%
Others	22%	21%

Share of bottled export volume by price point

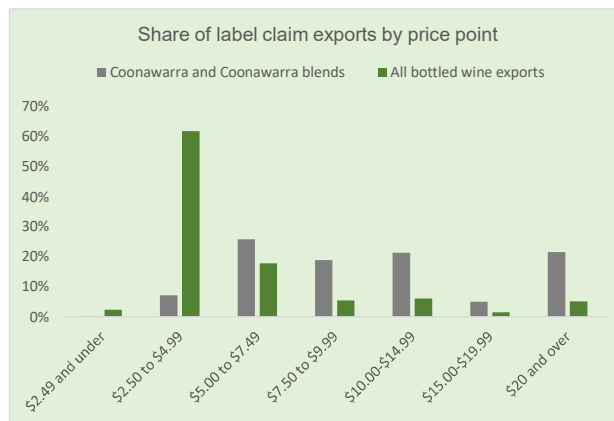
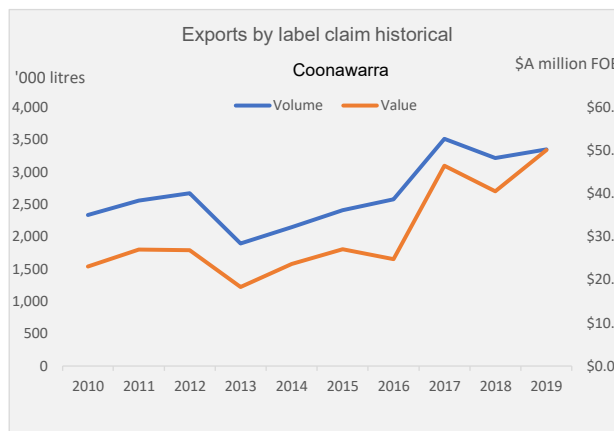
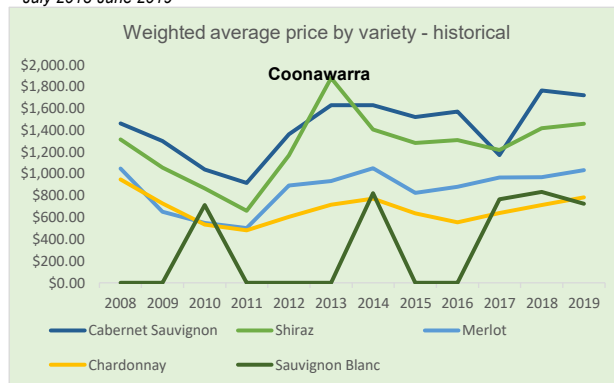
	Coonawarra and Coonawarra blends	All bottled wine exports
\$2.49 and under	0%	2%
\$2.50 to \$4.99	7%	62%
\$5.00 to \$7.49	26%	18%
\$7.50 to \$9.99	19%	5%
\$10.00-\$14.99	21%	6%
\$15.00-\$19.99	5%	1%
\$20 and over	22%	5%

### Climate data

Source: Bureau of Meteorology (2019)

Coonawarra					
Size (km <sup>2</sup> )	400	Elevation (m)	51-127	Latitude	37° 32'
Time period	Mean Jan temp (MJT)	Annual* rainfall	Oct-April GSR	GDD	
1961-1990 average	19.4 °C	628 mm	248 mm	1442	
1991-2018 average	19.9 °C	604 mm	235 mm	1494	
2018-19 season*	21.2 °C	560 mm	179 mm	1587	

\*July 2018-June 2019



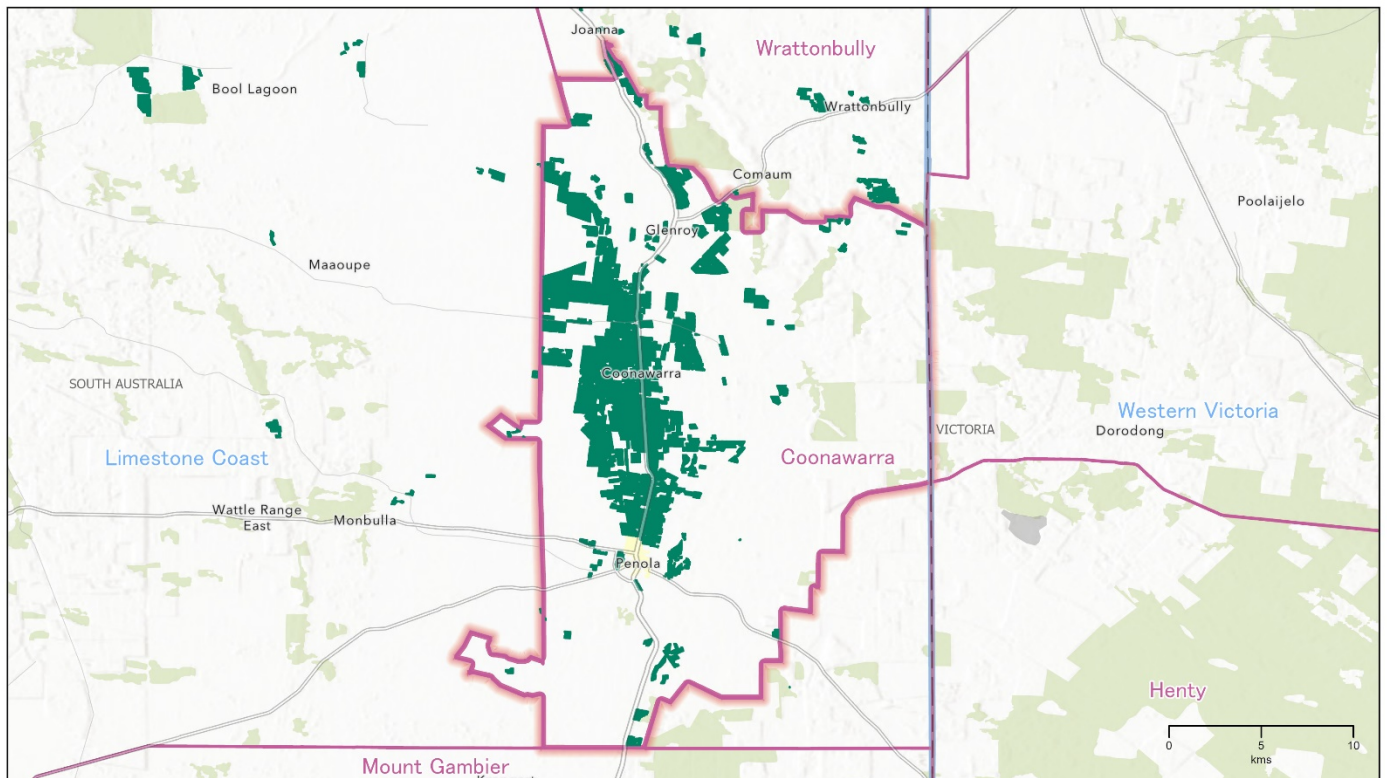
### Notes

Meteorological data is taken from the national climate databank of the Bureau of Meteorology: the Australian Data Archive for Meteorology (ADAM). Climate indices have been calculated across the whole GI region by the Antarctic Climate Ecosystem CRC as part of a research project co-funded by Wine Australia. Growing season rainfall (GSR) and growing degree days (GDD) are both calculated from October to April across the whole GI region. GSR and GDD for individual vineyards will vary from this value. Latitude data is the centroid of each GI region. Altitude/elevation data is the highest and lowest point in the region - regardless of whether there is a vineyard at that location. Area data comes from the National Vineyard Scan 2019 conducted by GAIA on behalf of Wine Australia. Variety share from ABS vineyard survey 2015. Estimated crush figures are higher than the figures reported in the survey as the estimated figure is raised to allow for the non-response rate. Exports by GI content includes all wine that has been identified by the exporter as coming from the GI, but not necessarily claimed on the label.

# Regional snapshot 2019 – Coonawarra

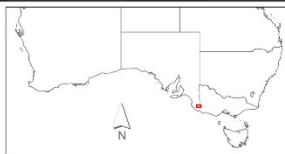
## COONAWARRA

South Australia



Wine Australia  
for  
Australian  
Wine

Copyright in this map is owned by Wine Australia July 2020.  
Vineyard boundaries created and supplied by GAIA for the National Vineyard Scan 2019. Visit [gaia.com.au](http://gaia.com.au) for more information. This information is reproduced with the permission of GAIA Innovations.  
Geographic Indications (GI) boundaries: Wine Australia (including South Australia where they are provided with permission by Wine Australia). For full information on the Boundaries of Geographical Indications (GI) for Australia, visit [www.geographicalindicators.gov.au](http://www.geographicalindicators.gov.au) and other [www.geographicalindicators.gov.au](http://www.geographicalindicators.gov.au) publications.  
Base map sources: Esri, HERE, DeLorme, Mapbox, OpenStreetMap contributors, and the GIS User Community © Commonwealth of Australia (Geoscience Australia) 2016.  
No warranty, liability, price and reproduction is intended only for informational purposes and is not intended to constitute an offer or any other financial product or service. This information is provided for informational purposes only and is not intended to constitute an offer or any other financial product or service. This information is provided for informational purposes only and is not intended to constitute an offer or any other financial product or service.  
Map produced by Tracable Solutions Pty Ltd, June 2020.



GI Regions  
GI Zones  
Vineyards (GAIA 2019)

This map provides a visual representation of the Geographical Indications (GI) boundary defined in the Initial Description of the GI. This visual description is the final deliverable of the GI and in case of any discrepancy or ambiguity, the Initial Description prevails.



**Disclaimer:** While Wine Australia makes every effort to ensure the accuracy and currency of information within this report, we accept no responsibility for information, which may later prove to be misrepresented or inaccurate, or reliance placed on that information by readers.

Provisions of the Copyright Act 1968 apply to the contents of this publication, all other right reserved. For further copyright authorisation please see the [www.wineaustralia.com](http://www.wineaustralia.com) website.

**About Wine Australia:** Wine Australia supports a competitive wine sector by investing in research, development and adoption (RDA), growing domestic and international markets, protecting the reputation of Australian wine and administering the Export and Regional Wine Support Package (ERWSP).

Wine Australia is an Australian Commonwealth Government statutory authority, established under the Wine Australia Act 2013, and funded by grape growers and winemakers through levies and user-pays charges and the Australian Government, which provides matching funding for RDA investments and funds the ERWSP.

Wine Australia providing insights on Australian Wine