

# Wine Australia providing insights on Australian Wine

## Regional snapshot 2019 - Adelaide Hills

State **South Australia**

Published **July 2020**

### Plantings

Source: National Vineyard Scan 2019 and ABS

	Adelaide Hills	All regions
Total vineyard area (hectares)	3,832	146,244
Percentage red varieties	40%	64%
Percentage of national vineyards	3%	
Percentage of South Australia vineyards	5%	

### Crush

Source: National Vintage Survey 2019

	Adelaide Hills	All regions
Estimated tonnes crushed in 2019	31,682	1,725,758
Average yield (tonnes/ha)	8.3	11.8
Change in crush from 2018	78%	3%

Top five varieties in Adelaide Hills in 2019	Share of tonnes	Av price/tonne
Sauvignon Blanc	29%	\$1,356
Chardonnay	24%	\$1,635
Pinot Noir	22%	\$1,607
Pinot Gris/Grigio	7%	\$1,536
Shiraz	6%	\$2,121

### Exports

Source: Wine Australia Wine Export Approval System YE December 2019

Exports by GI content	Adelaide Hills	All exports
Export volume by GI content ('000 litres)	2,925	743,464
Percentage of total exports	0.4%	100%
Percentage of crush exported (estimate)	13%	62%

### Label claim exports (bottled only)

	Adelaide Hills and Adelaide Hills blends	Change in 2019
Export volume by GI label claim ('000 litres)	1,954	-9%
Export value by GI label claim (\$A '000)	22,210	2%
Average value per litre	\$11.37	11%

Share of bottled export volume by destination market	Adelaide Hills and Adelaide Hills blends	All bottled wine exports
United Kingdom	28%	10%
China, Pr	20%	33%
Canada	10%	7%
United States Of America	7%	24%
United Arab Emirates	4%	1%
Others	31%	25%

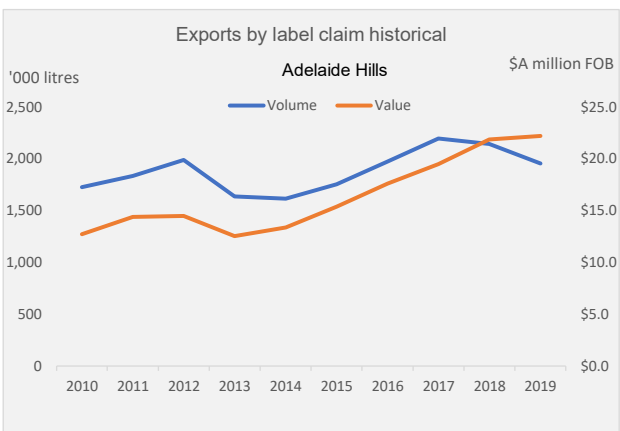
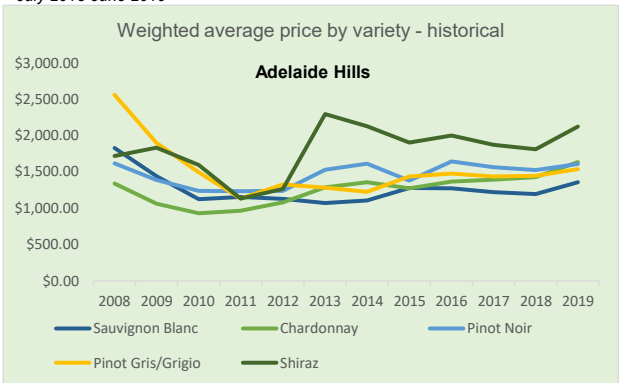
Share of bottled export volume by price point	Adelaide Hills and Adelaide Hills blends	All bottled wine exports
\$2.49 and under	0%	2%
\$2.50 to \$4.99	7%	62%
\$5.00 to \$7.49	25%	18%
\$7.50 to \$9.99	28%	5%
\$10.00-\$14.99	22%	6%
\$15.00-\$19.99	5%	1%
\$20 and over	12%	5%

### Climate data

Source: Bureau of Meteorology (2019)

Adelaide Hills					
Size (km <sup>2</sup> )	1 470	Elevation (m)	149-714	Latitude	34° 98'
Time period	Mean Jan temp (MJT)	Annual* rainfall	Oct-April		
	GSR	GDD			
1961-1990 average	19.6 °C	801 mm	285 mm	1475	
1991-2018 average	20.8 °C	720 mm	250 mm	1671	
2018-19 season*	23.4 °C	600 mm	157 mm	1911	

\*July 2018-June 2019



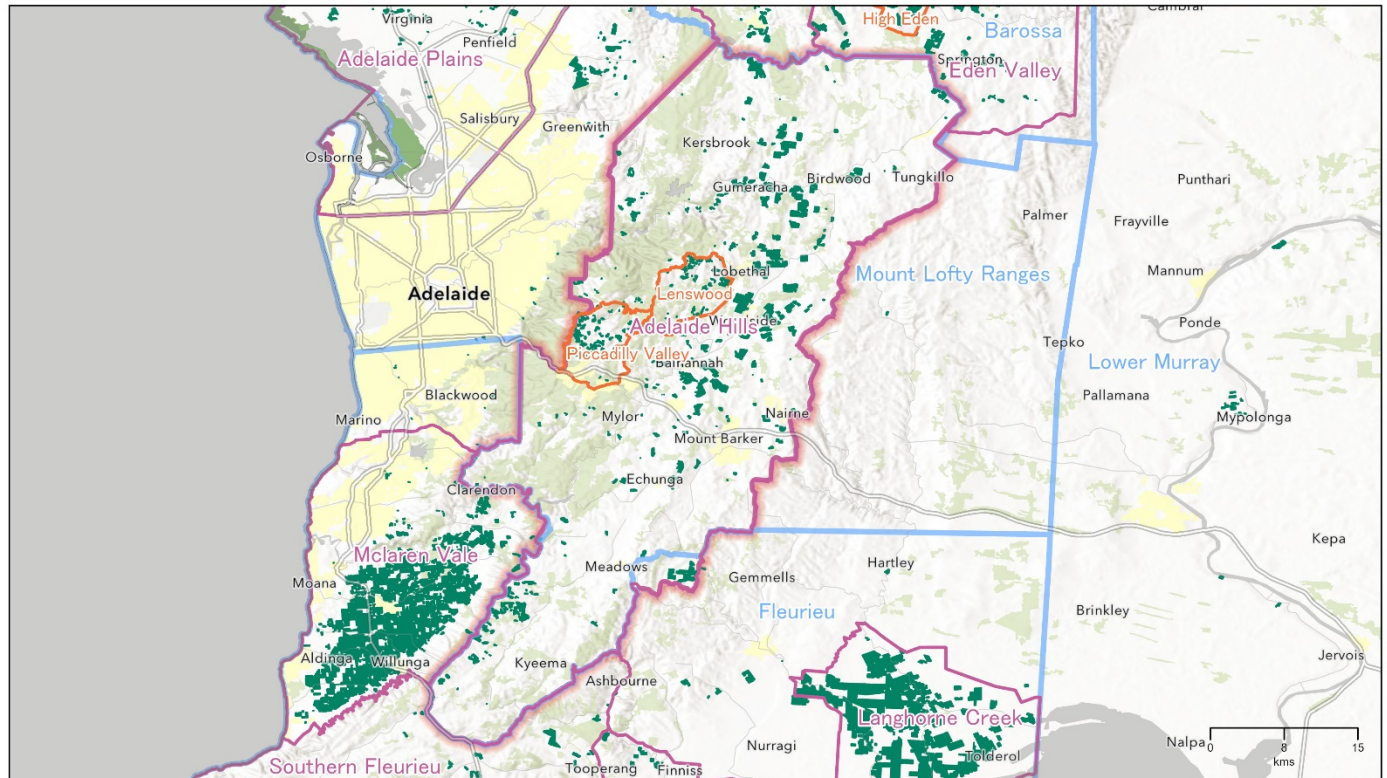
### Notes

Meteorological data is taken from the national climate databank of the Bureau of Meteorology: the Australian Data Archive for Meteorology (ADAM). Climate indices have been calculated across the whole GI region by the Antarctic Climate Ecosystem CRC as part of a research project co-funded by Wine Australia. Growing season rainfall (GSR) and growing degree days (GDD) are both calculated from October to April across the whole GI region. GSR and GDD for individual vineyards will vary from this value. Latitude data is the centroid of each GI region. Altitude/elevation data is the highest and lowest point in the region - regardless of whether there is a vineyard at that location. Area data comes from the National Vineyard Scan 2019 conducted by GAIA on behalf of Wine Australia. Variety share from ABS vineyard survey 2015. Estimated crush figures are higher than the figures reported in the survey as the estimated figure is raised to allow for the non-response rate. Exports by GI content includes all wine that has been identified by the exporter as coming from the GI, but not necessarily claimed on the label.

# Regional snapshot 2019 – Adelaide Hills

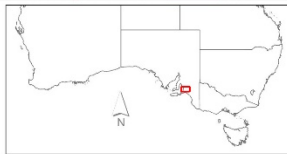
## ADELAIDE HILLS

South Australia



Wine Australia  
for  
Australian  
Wine

Copyright in this map is owned by Wine Australia July 2019.  
Vineyard boundaries created and supplied by GAIA for the National Vineyard Survey 2019. Visit [www.gaia.net.au](http://www.gaia.net.au) for more information. This information is reproduced with the permission of GAIA Innovations.  
Geographic Indications (GI) boundaries: Wine Australia (including South Australia) where they are provided with permission by Wine Australia. For other information on the GI boundaries visit [www.wineaustralia.com.au/gi](http://www.wineaustralia.com.au/gi) or [gaia@gaia.net.au](mailto:gaia@gaia.net.au) or other [www.gaia.net.au](http://www.gaia.net.au) publications.  
Base map sources: Esri, HERE, Garmin, FAO, NOAA, USGS, © OpenStreetMap contributors, and the GIS User Community © Commonwealth of Australia (Geoscience Australia) 2018.  
No warranty, liability, price and reproduction of this material for commercial or other use without prior permission or long as an appropriate acknowledgement to the copyright owner. This also must be shown with correct postal address parties without written consent from Wine Australia. More information can be found at [www.wineaustralia.com](http://www.wineaustralia.com)  
Map produced by Invaluable Solutions Pty Ltd, June 2019



Legend:  
■ GI Sub Regions  
■ GI Regions  
■ GI Zones  
■ Vineyards (GAIA 2019)  
This map provides a visual representation of the Geographical Indications (GI) boundary defined in the Initial Description for the GI. This visual description is the final deliverable of the GI and in case of any discrepancy or ambiguity, the Initial Description prevails.



**Disclaimer:** While Wine Australia makes every effort to ensure the accuracy and currency of information within this report, we accept no responsibility for information, which may later prove to be misrepresented or inaccurate, or reliance placed on that information by readers.

Provisions of the Copyright Act 1968 apply to the contents of this publication, all other right reserved. For further copyright authorisation please see the [www.wineaustralia.com](http://www.wineaustralia.com) website.

**About Wine Australia:** Wine Australia supports a competitive wine sector by investing in research, development and adoption (RDA), growing domestic and international markets, protecting the reputation of Australian wine and administering the Export and Regional Wine Support Package (ERWSP).

Wine Australia is an Australian Commonwealth Government statutory authority, established under the Wine Australia Act 2013, and funded by grape growers and winemakers through levies and user-pays charges and the Australian Government, which provides matching funding for RDA investments and funds the ERWSP.

Wine Australia **providing insights on** Australian Wine