

Wine Australia providing insights on Australian Wine

Regional snapshot 2019 - Eden Valley

State **South Australia**

Published **July 2020**

Plantings

Source: National Vineyard Scan 2019 and ABS

	Eden Valley	All regions
Total vineyard area (hectares)	2,102	146,244
Percentage red varieties	53%	64%
Percentage of national vineyards	1%	
Percentage of South Australia vineyards	3%	

Crush

Source: National Vintage Survey 2019

	Eden Valley	All regions
Estimated tonnes crushed in 2019	13,505	1,725,758
Average yield (tonnes/ha)	6.4	11.8
Change in crush from 2018	122%	3%

Top five varieties in Eden Valley in 2019

	Share of tonnes	Av price/tonne
Riesling	37%	\$1,645
Shiraz	20%	\$2,755
Chardonnay	13%	\$1,426
Cabernet Sauvignon	10%	\$2,505
Merlot	3%	\$1,334

Exports

Source: Wine Australia Wine Export Approval System YE December 2019

Exports by GI content	Eden Valley	All exports
Export volume by GI content ('000 litres)	1,218	743,464
Percentage of total exports	0.2%	100%
Percentage of crush exported (estimate)	13%	62%

Label claim exports (bottled only)

	Eden Valley and Eden Valley blends	Change in 2019
Export volume by GI label claim ('000 litres)	520 ↓	-6%
Export value by GI label claim (\$A '000)	8,698 ↑	7%
Average value per litre	\$16.74 ↑	13%

Share of bottled export volume by destination market	Eden Valley and Eden Valley blends	All bottled wine exports
China, Pr	36%	33%
United Kingdom	21%	10%
United States Of America	12%	24%
Hong Kong	4%	2%
Canada	4%	7%
Others	24%	24%

Share of bottled export volume by price point	Eden Valley and Eden Valley blends	All bottled wine exports
\$2.49 and under	0%	2%
\$2.50 to \$4.99	2%	62%
\$5.00 to \$7.49	16%	18%
\$7.50 to \$9.99	21%	5%
\$10.00-\$14.99	36%	6%
\$15.00-\$19.99	8%	1%
\$20 and over	17%	5%

Notes

Meteorological data is taken from the national climate databank of the Bureau of Meteorology: the Australian Data Archive for Meteorology (ADAM).

Climate indices have been calculated across the whole GI region by the Antarctic Climate Ecosystem CRC as part of a research project co-funded by Wine Australia.

Growing season rainfall (GSR) and growing degree days (GDD) are both calculated from October to April across the whole GI region. GSR and GDD for individual vineyards will vary from this value.

Latitude data is the centroid of each GI region. Altitude/elevation data is the highest and lowest point in the region - regardless of whether there is a vineyard at that location.

Area data comes from the National Vineyard Scan 2019 conducted by GAIA on behalf of Wine Australia. Variety share from ABS vineyard survey 2015.

Estimated crush figures are higher than the figures reported in the survey as the estimated figure is raised to allow for the non-response rate.

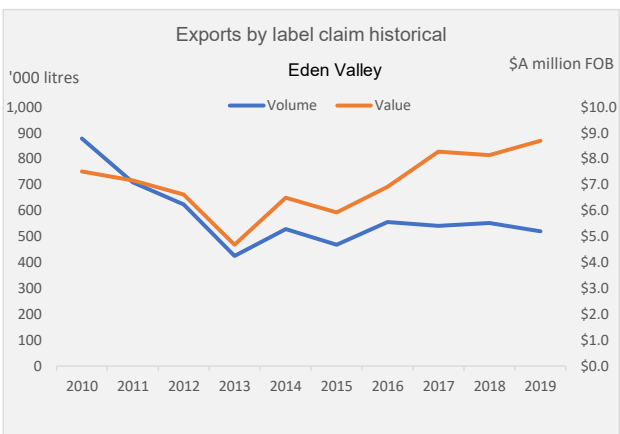
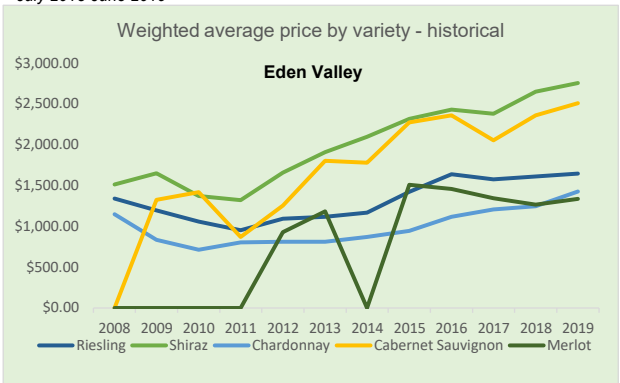
Exports by GI content includes all wine that has been identified by the exporter as coming from the GI, but not necessarily claimed on the label.

Climate data

Source: Bureau of Meteorology (2019)

Eden Valley					
Size (km ²)	600	Elevation (m)	219-632	Latitude	34° 62'
Time period	Mean Jan temp (MJT)	Annual* rainfall	Oct-April GSR	GDD	
1961-1990 average	20.1 °C	606 mm	230 mm	1531	
1991-2018 average	21.7 °C	524 mm	208 mm	1788	
2018-19 season*	24.4 °C	347 mm	101 mm	2031	

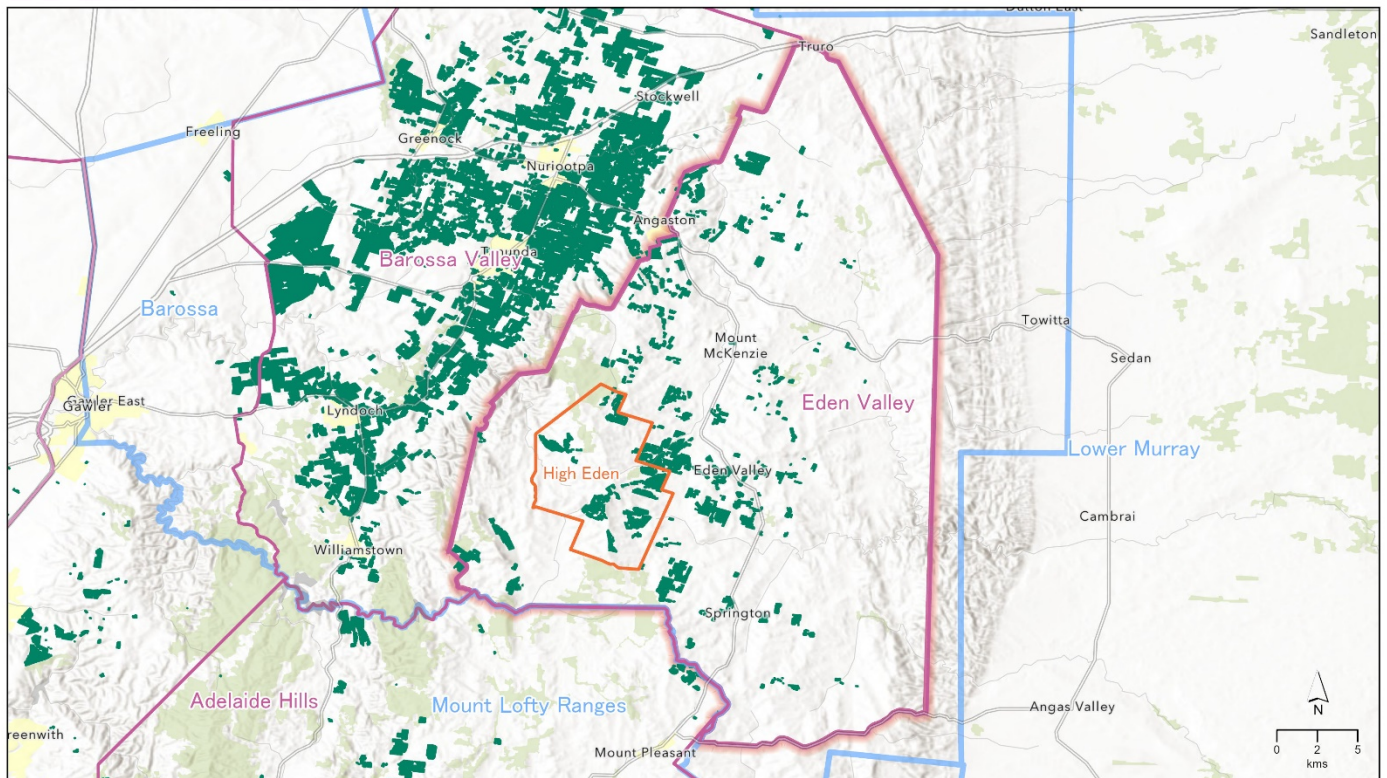
*July 2018-June 2019



Regional snapshot 2019 – Eden Valley

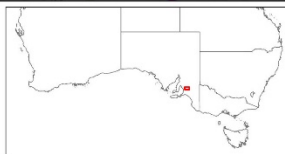
EDEN VALLEY

South Australia



Wine Australia
for
Australian
Wine

Copyright in this map is owned by Wine Australia July 2020
 Vineyard boundaries created and supplied by GAIA for the National Vineyard Scan 2019. Visit www.gaia.com.au for more information. This information is reproduced with the permission of GAIA Innovations.
 Geographic Indications (GI) boundaries Wine Australia (including South Australia) when they are provided with permission by Wine Australia. For full information on the Boundaries of Geographical Indications (GI) visit www.gaia.com.au or contact gaia@gaia.com.au
 Base map sources: Esri, HERE, Garmin, FAO, NOAA, USGS, © OpenStreetMap contributors, and the GIS User Community © Commonwealth of Australia (Geoscience Australia) 2016.
 No warranty, liability, printed and reproduced in whole or in part without the prior written permission of Wine Australia. All rights reserved. This document is the property of Wine Australia. All other information contained herein is the property of the respective owners.
 Map produced by TerraViva Solutions Pty Ltd, June 2020



GI Sub Regions
 GI Regions
 GI Zones
 Vineyards (GAIA 2019)

This map provides a visual representation of the Geographical Indications (GI) boundary defined in the National Description for the GI. This visual description is the final definition of the GI and in case of any discrepancy or ambiguity, the final description prevails.



Disclaimer: While Wine Australia makes every effort to ensure the accuracy and currency of information within this report, we accept no responsibility for information, which may later prove to be misrepresented or inaccurate, or reliance placed on that information by readers.

Provisions of the Copyright Act 1968 apply to the contents of this publication, all other right reserved. For further copyright authorisation please see the www.wineaustralia.com website.

About Wine Australia: Wine Australia supports a competitive wine sector by investing in research, development and adoption (RDA), growing domestic and international markets, protecting the reputation of Australian wine and administering the Export and Regional Wine Support Package (ERWSP).

Wine Australia is an Australian Commonwealth Government statutory authority, established under the Wine Australia Act 2013, and funded by grape growers and winemakers through levies and user-pays charges and the Australian Government, which provides matching funding for RDA investments and funds the ERWSP.

Wine Australia providing insights on Australian Wine