

# Wine Australia providing insights on Australian Wine

## Regional snapshot 2019 - Clare Valley

State	South Australia	
-------	-----------------	--

Published July 2020

### Plantings

Source: National Vineyard Scan 2019 and ABS

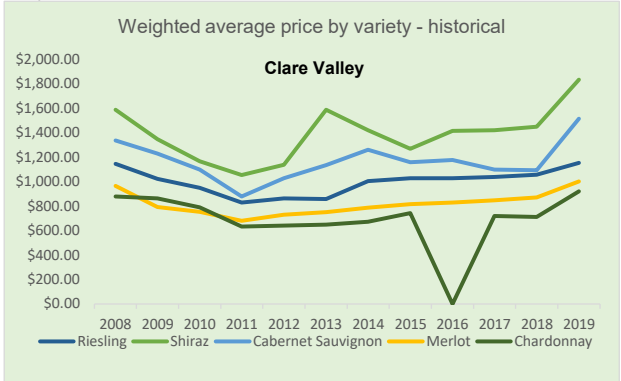
	Clare Valley	All regions
Total vineyard area (hectares)	4,994	146,244
Percentage red varieties	72%	64%
Percentage of national vineyards	3%	
Percentage of South Australia vineyards	7%	

### Climate data

Source: Bureau of Meteorology (2019)

Clare Valley					
Size (km <sup>2</sup> )	690	Elevation (m)	190-609	Latitude	33° 89'
Time period	Mean Jan temp (MJT)	Annual* rainfall	Oct-April GSR	GDD	
1961-1990 average	21.6 °C	568 mm	218 mm	1778	
1991-2018 average	22.6 °C	516 mm	219 mm	1925	
2018-19 season*	25.5 °C	391 mm	115 mm	2156	

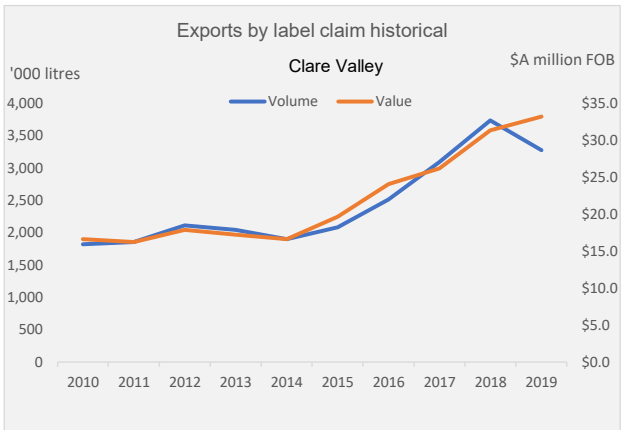
\*July 2018-June 2019



### Crush

Source: National Vintage Survey 2019

	Clare Valley	All regions
Estimated tonnes crushed in 2019	26,886	1,725,758
Average yield (tonnes/ha)	5.4	11.8
Change in crush from 2018	56%	3%



Top five varieties in Clare Valley in 2019	Share of tonnes	Av price/tonne
Riesling	36%	\$1,151
Shiraz	28%	\$1,832
Cabernet Sauvignon	15%	\$1,510
Merlot	6%	\$999
Chardonnay	3%	\$918

### Exports

Source: Wine Australia Wine Export Approval System YE December 2019

Exports by GI content	Clare Valley	All exports
Export volume by GI content ('000 litres)	4,794	743,464
Percentage of total exports	0.6%	100%
Percentage of crush exported (estimate)	25%	62%

### Label claim exports (bottled only)

	Clare Valley and Clare Valley blends	Change in 2019
Export volume by GI label claim ('000 litres)	3,273 ↓	-12%
Export value by GI label claim (\$A '000)	33,181 ↑	6%
Average value per litre	\$10.14 ↑	21%



Share of bottled export volume by destination market	Clare Valley and Clare Valley blends	All bottled wine exports
China, Pr	39%	33%
United Kingdom	18%	10%
New Zealand	14%	4%
Netherlands	7%	3%
Canada	6%	7%
Others	16%	43%

Share of bottled export volume by price point	Clare Valley and Clare Valley blends	All bottled wine exports
\$2.49 and under	0%	2%
\$2.50 to \$4.99	5%	62%
\$5.00 to \$7.49	44%	18%
\$7.50 to \$9.99	21%	5%
\$10.00-\$14.99	20%	6%
\$15.00-\$19.99	5%	1%
\$20 and over	4%	5%

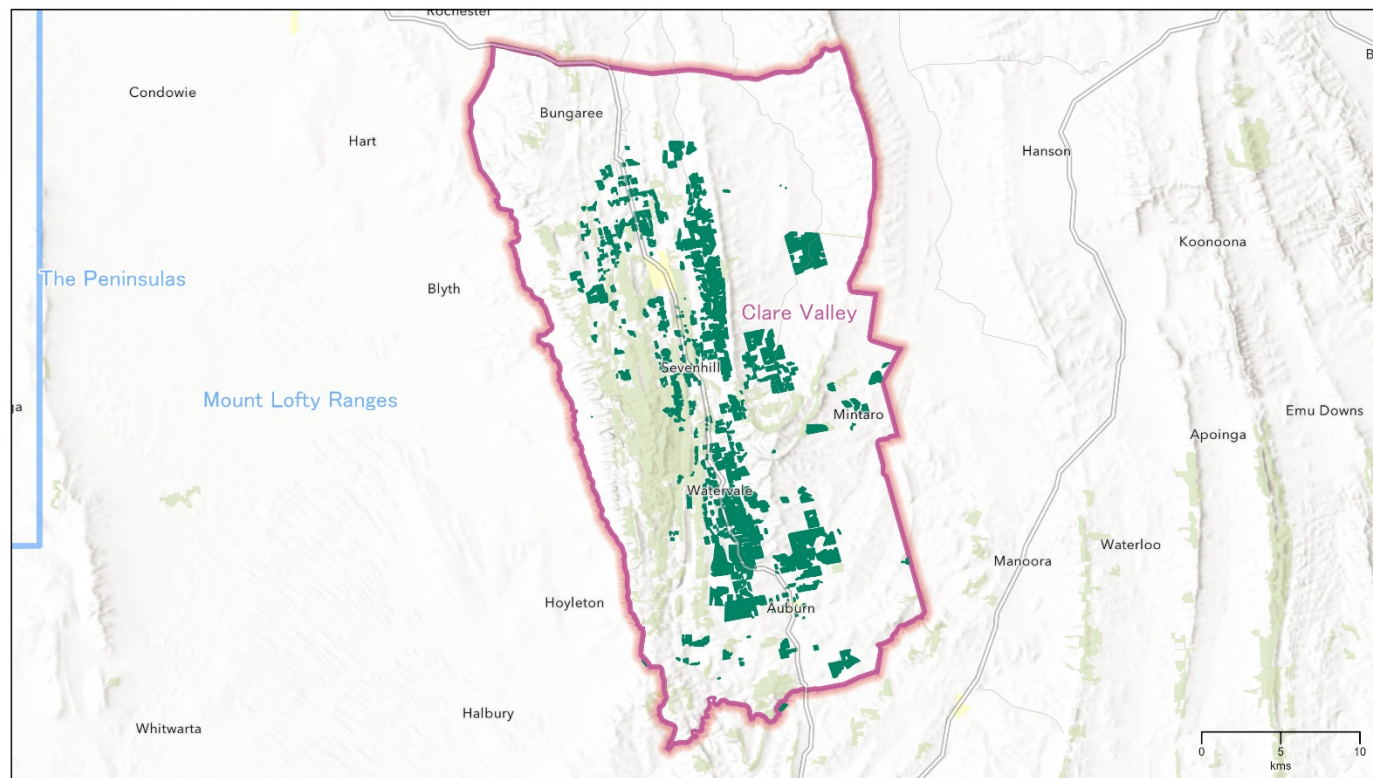
### Notes

Meteorological data is taken from the national climate databank of the Bureau of Meteorology: the Australian Data Archive for Meteorology (ADAM). Climate indices have been calculated across the whole GI region by the Antarctic Climate Ecosystem CRC as part of a research project co-funded by Wine Australia. Growing season rainfall (GSR) and growing degree days (GDD) are both calculated from October to April across the whole GI region. GSR and GDD for individual vineyards will vary from this value. Latitude data is the centroid of each GI region. Altitude/elevation data is the highest and lowest point in the region - regardless of whether there is a vineyard at that location. Area data comes from the National Vineyard Scan 2019 conducted by GAIA on behalf of Wine Australia. Variety share from ABS vineyard survey 2015. Estimated crush figures are higher than the figures reported in the survey as the estimated figure is raised to allow for the non-response rate. Exports by GI content includes all wine that has been identified by the exporter as coming from the GI, but not necessarily claimed on the label.

# Regional snapshot 2019 – Clare Valley

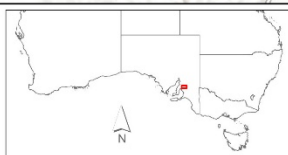
## CLARE VALLEY

South Australia



Wine Australia  
for  
Australian Wine

Copyright in this map is owned by Wine Australia July 2019.  
Vineyard boundaries created and supplied by GAIA for the National Vineyard Scan 2019. Visit [www.gaia.com.au](http://www.gaia.com.au) for more information. This information is reproduced with the permission of GAIA Innovations.  
Geographic Indications (GI) boundaries: Wine Australia (including South Australia where they are provided with permission by Wine Australia). For other information on the Boundaries of Australian Wine Regions visit [www.wineaustralia.com.au](http://www.wineaustralia.com.au) or [gaia@wineaustralia.com.au](mailto:gaia@wineaustralia.com.au)  
Base map sources: Esri, HERE, DeLorme, Mapbox, Swatch, USGS, AeroGRID, IGN, and the GIS User Community © Commonwealth of Australia (Geoscience Australia) 2018.  
No warranty, liability, or reproduction is intended for commercial use or for use in any other context without the prior written consent of Wine Australia. All information is provided as is and without warranty of any kind. For more information on the Boundaries of Australian Wine Regions visit [www.wineaustralia.com.au](http://www.wineaustralia.com.au)  
Map produced by Triviale Solutions Pty Ltd, June 2019



GI Regions  
GI Zones  
Vineyards (GAIA 2019)



This map provides a visual representation of the Geographical Indications (GI) boundary defined in the Initial Description of the GI. This boundary is the final deliverable of the GI and in case of any discrepancy or ambiguity, the Initial Description prevails.

**Disclaimer:** While Wine Australia makes every effort to ensure the accuracy and currency of information within this report, we accept no responsibility for information, which may later prove to be misrepresented or inaccurate, or reliance placed on that information by readers.

Provisions of the Copyright Act 1968 apply to the contents of this publication, all other right reserved. For further copyright authorisation please see the [www.wineaustralia.com](http://www.wineaustralia.com) website.

**About Wine Australia:** Wine Australia supports a competitive wine sector by investing in research, development and adoption (RDA), growing domestic and international markets, protecting the reputation of Australian wine and administering the Export and Regional Wine Support Package (ERWSP).

Wine Australia is an Australian Commonwealth Government statutory authority, established under the Wine Australia Act 2013, and funded by grape growers and winemakers through levies and user-pays charges and the Australian Government, which provides matching funding for RDA investments and funds the ERWSP.

Wine Australia providing insights on Australian Wine